

# Listed Land Use Register

## What you need to know



## What is the Listed Land Use Register (LLUR)?

The LLUR is a database that Environment Canterbury uses to manage information about land that is, or has been, associated with the use, storage or disposal of hazardous substances.

## Why do we need the LLUR?

Some activities and industries are hazardous and can potentially contaminate land or water. We need the LLUR to help us manage information about land which could pose a risk to your health and the environment because of its current or former land use.

Section 30 of the Resource Management Act (RMA, 1991) requires Environment Canterbury to investigate, identify and monitor contaminated land. To do this we follow national guidelines and use the LLUR to help us manage the information.

The information we collect also helps your local district or city council to fulfil its functions under the RMA. One of these is implementing the National Environmental Standard (NES) for Assessing and Managing Contaminants in Soil, which came into effect on 1 January 2012.

For information on the NES, contact your city or district council.

## How does Environment Canterbury identify sites to be included on the LLUR?

We identify sites to be included on the LLUR based on a list of land uses produced by the Ministry for the Environment (MfE). This is called the Hazardous Activities and Industries List (HAIL)<sup>1</sup>. The HAIL has 53 different activities, and includes land uses such as fuel storage sites, orchards, timber treatment yards, landfills, sheep dips and any other activities where hazardous substances could cause land and water contamination.

### We have two main ways of identifying HAIL sites:

- We are actively identifying sites in each district using historic records and aerial photographs. This project started in 2008 and is ongoing.
- We also receive information from other sources, such as environmental site investigation reports submitted to us as a requirement of the Regional Plan, and in resource consent applications.

<sup>1</sup> The Hazardous Activities and Industries List (HAIL) can be downloaded from MfE's website [www.mfe.govt.nz](http://www.mfe.govt.nz), keyword search HAIL

## How does Environment Canterbury classify sites on the LLUR?

Where we have identified a HAIL land use, we review all the available information, which may include investigation reports if we have them. We then assign the site a category on the LLUR. The category is intended to best describe what we know about the land use and potential contamination at the site and is signed off by a senior staff member.

Please refer to the Site Categories and Definitions factsheet for further information.

## What does Environment Canterbury do with the information on the LLUR?

The LLUR is available online at [www.llur.ecan.govt.nz](http://www.llur.ecan.govt.nz). We mainly receive enquiries from potential property buyers and environmental consultants or engineers working on sites. An inquirer would typically receive a summary of any information we hold, including the category assigned to the site and a list of any investigation reports.

We may also use the information to prioritise sites for further investigation, remediation and management, to aid with planning, and to help assess resource consent applications. These are some of our other responsibilities under the RMA.

If you are conducting an environmental investigation or removing an underground storage tank at your property, you will need to comply with the rules in the Regional Plan and send us a copy of the report. This means we can keep our records accurate and up-to-date, and we can assign your property an appropriate category on the LLUR. To find out more, visit [www.ecan.govt.nz/HAIL](http://www.ecan.govt.nz/HAIL).



## My land is on the LLUR – what should I do now?

**IMPORTANT!** Just because your property has a land use that is deemed hazardous or is on the LLUR, it doesn't necessarily mean it's contaminated. The only way to know if land is contaminated is by carrying out a detailed site investigation, which involves collecting and testing soil samples.

You do not need to do anything if your land is on the LLUR and you have no plans to alter it in any way. It is important that you let a tenant or buyer know your land is on the Listed Land Use Register if you intend to rent or sell your property. If you are not sure what you need to tell the other party, you should seek legal advice.

You may choose to have your property further investigated for your own peace of mind, or because you want to do one of the activities covered by the National Environmental Standard for Assessing and Managing Contaminants in Soil. Your district or city council will provide further information.

If you wish to engage a suitably qualified experienced practitioner to undertake a detailed site investigation, there are criteria for choosing a practitioner on [www.ecan.govt.nz/HAIL](http://www.ecan.govt.nz/HAIL).



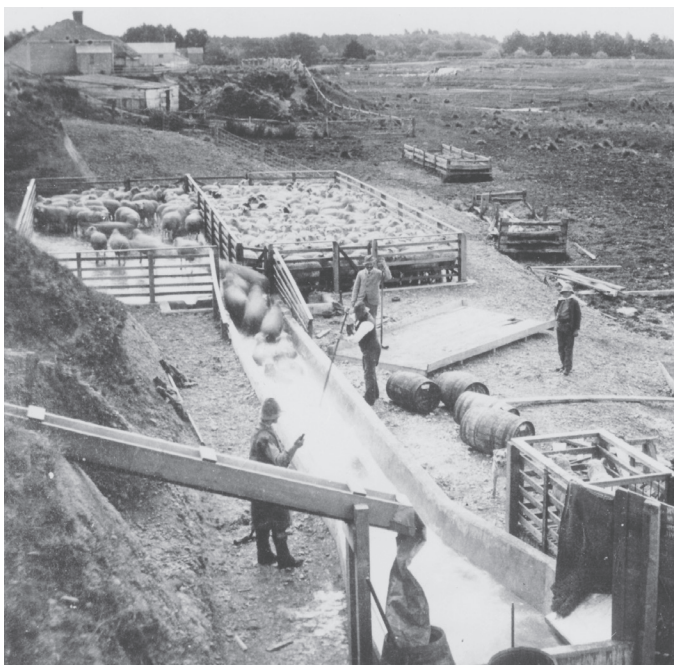
## I think my site category is incorrect – how can I change it?

If you have an environmental investigation undertaken at your site, you must send us the report and we will review the LLUR category based on the information you provide. Similarly, if you have information that clearly shows your site has not been associated with HAIL activities (eg. a preliminary site investigation), or if other HAIL activities have occurred which we have not listed, we need to know about it so that our records are accurate.

If we have incorrectly identified that a HAIL activity has occurred at a site, it will be not be removed from the LLUR but categorised as Verified Non-HAIL. This helps us to ensure that the same site is not re-identified in the future.

## IMPORTANT!

The LLUR is an online database which we are continually updating. A property may not currently be registered on the LLUR, but this does not necessarily mean that it hasn't had a HAIL use in the past.



Sheep dipping (ABOVE) and gas works (TOP) are among the former land uses that have been identified as potentially hazardous. (Photo above by Wheeler & Son in 1987, courtesy of Canterbury Museum.)

## Contact us

Property owners have the right to look at all the information Environment Canterbury holds about their properties.

It is free to check the information on the LLUR, online at [www.llur.ecan.govt.nz](http://www.llur.ecan.govt.nz).

If you don't have access to the internet, you can enquire about a specific site by phoning us on (03) 353 9007 or toll free on 0800 EC INFO (32 4636) during business hours.

### Contact Environment Canterbury:

Email: [ecinfo@ecan.govt.nz](mailto:ecinfo@ecan.govt.nz)

Phone:

Calling from Christchurch: (03) 353 9007

Calling from any other area: 0800 EC INFO (32 4636)